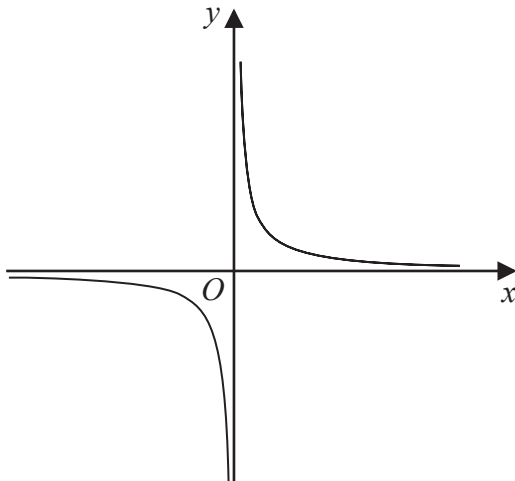
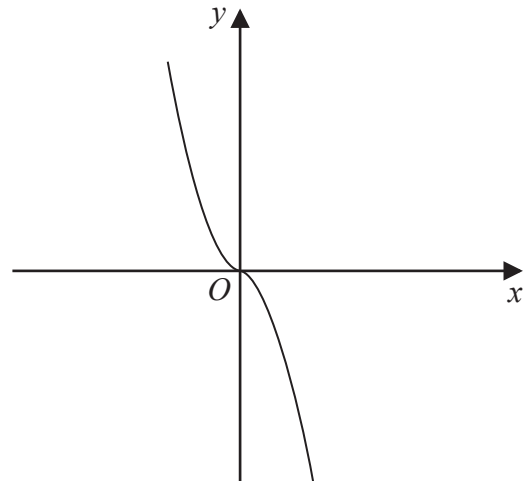


Cubic and Reciprocal Graphs

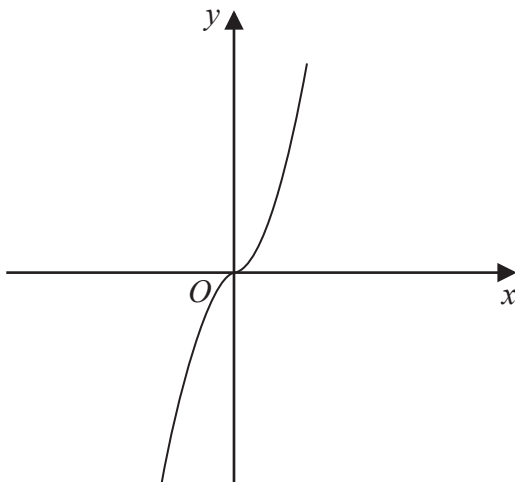
22 The diagram shows four graphs.



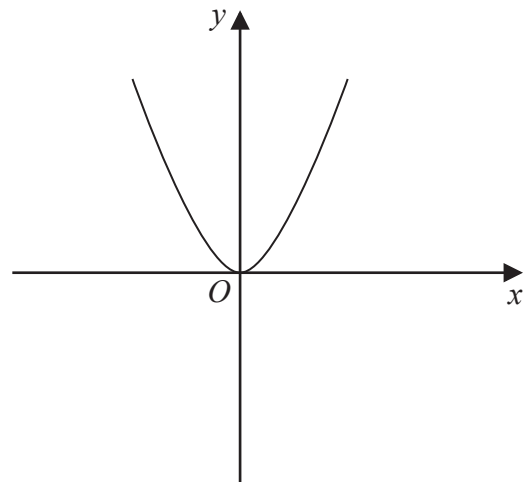
Graph A



Graph B



Graph C



Graph D

Each of the equations in the table is the equation of one of the graphs.

Complete the table.

Equation	Letter of graph
$y = -x^3$	
$y = x^3$	
$y = x^2$	
$y = \frac{1}{x}$	

(Total for Question 22 is 2 marks)

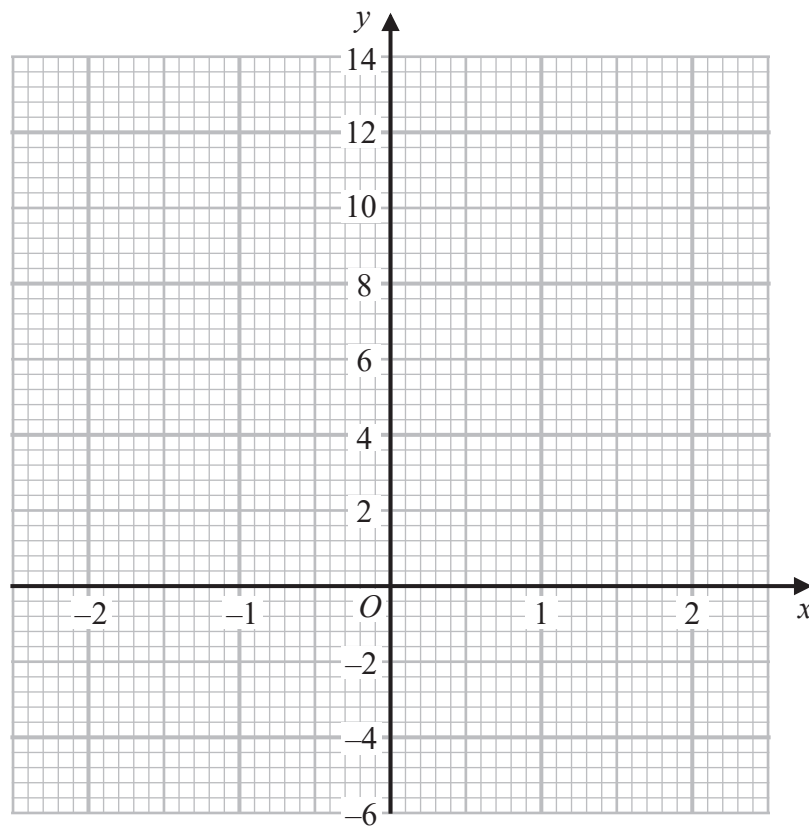
June 2020 Paper 2

24 (a) Complete the table of values for $y = 5 - x^3$

x	-2	-1	0	1	2
y		6			

(2)

(b) On the grid below, draw the graph of $y = 5 - x^3$ for values of x from -2 to 2

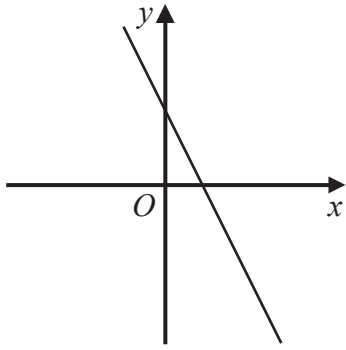


(2)

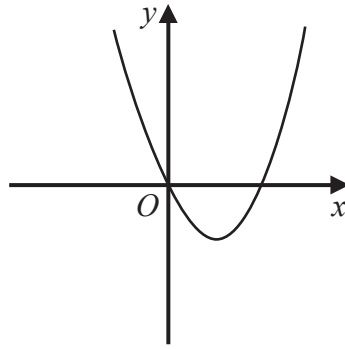
(Total for Question 24 is 4 marks)

June 2023 Paper 2

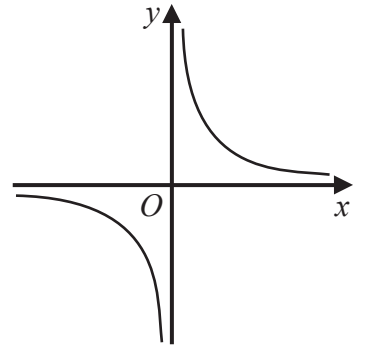
28 Here are five graphs.



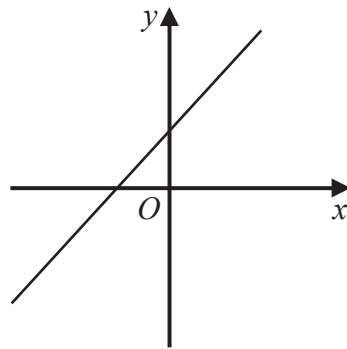
A



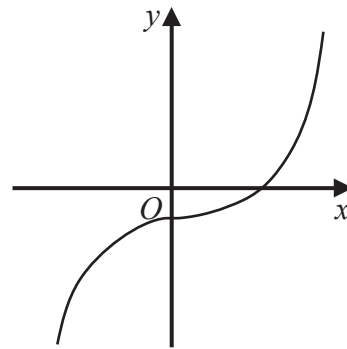
B



C



D



E

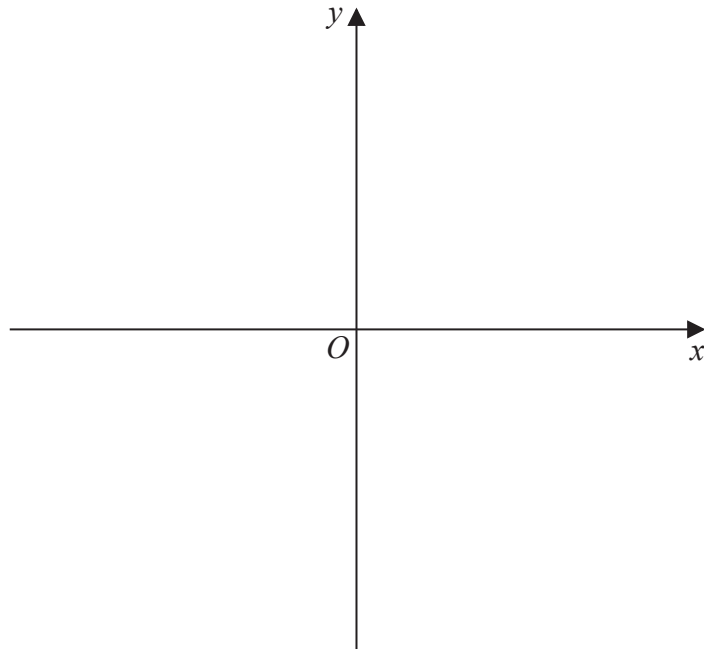
The table shows the equations of these graphs.

Equation	Graph
$y = x^2 - 4x$	
$y = x + 3$	
$y = x^3 - 2$	
$y = \frac{1}{x}$	
$y = 5 - 2x$	

Match the letter of each graph with its equation.

(Total for Question 28 is 3 marks)

28 Sketch the graph of $y = \frac{1}{x}$



(Total for Question 28 is 2 marks)